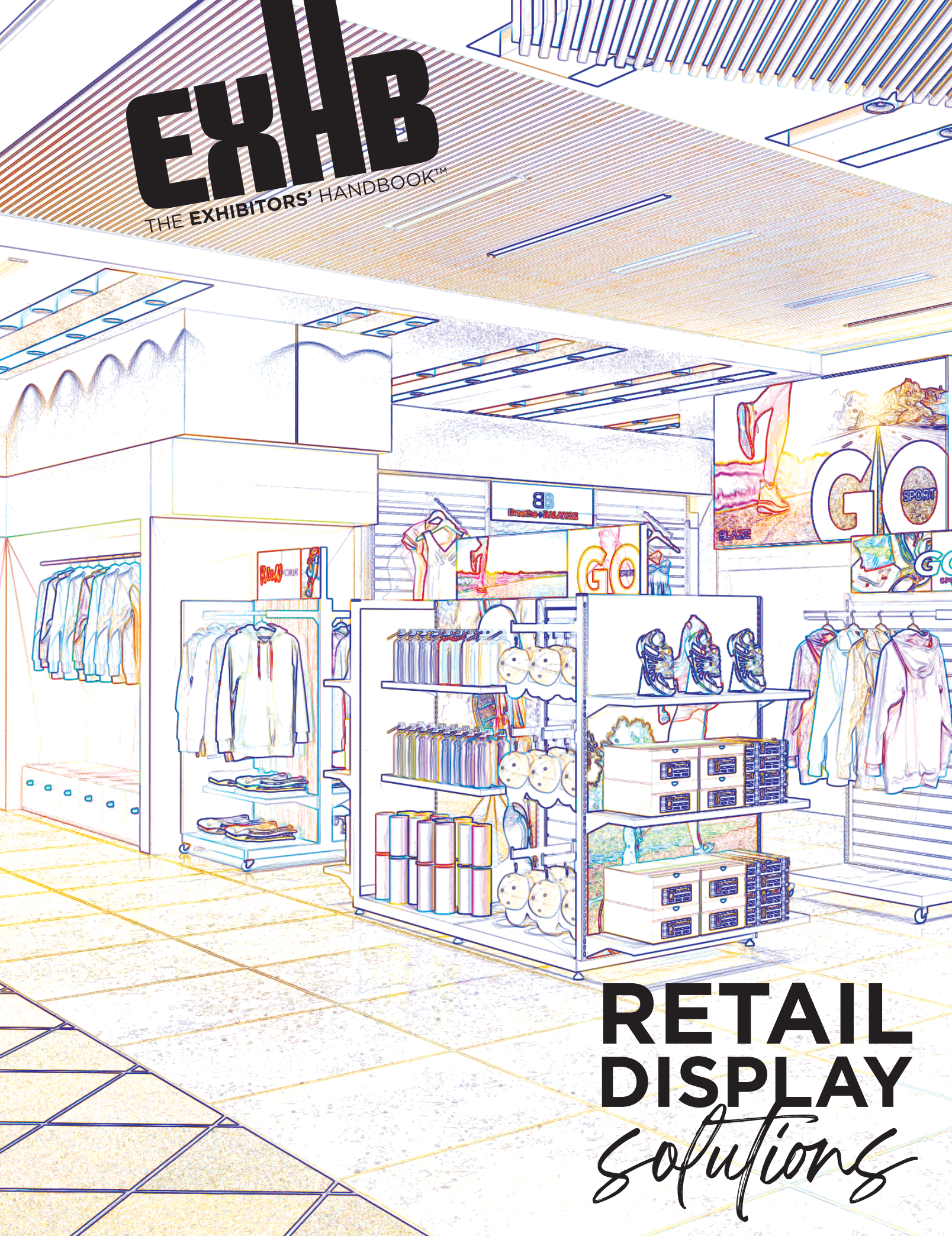


EXHB

THE EXHIBITORS' HANDBOOK™

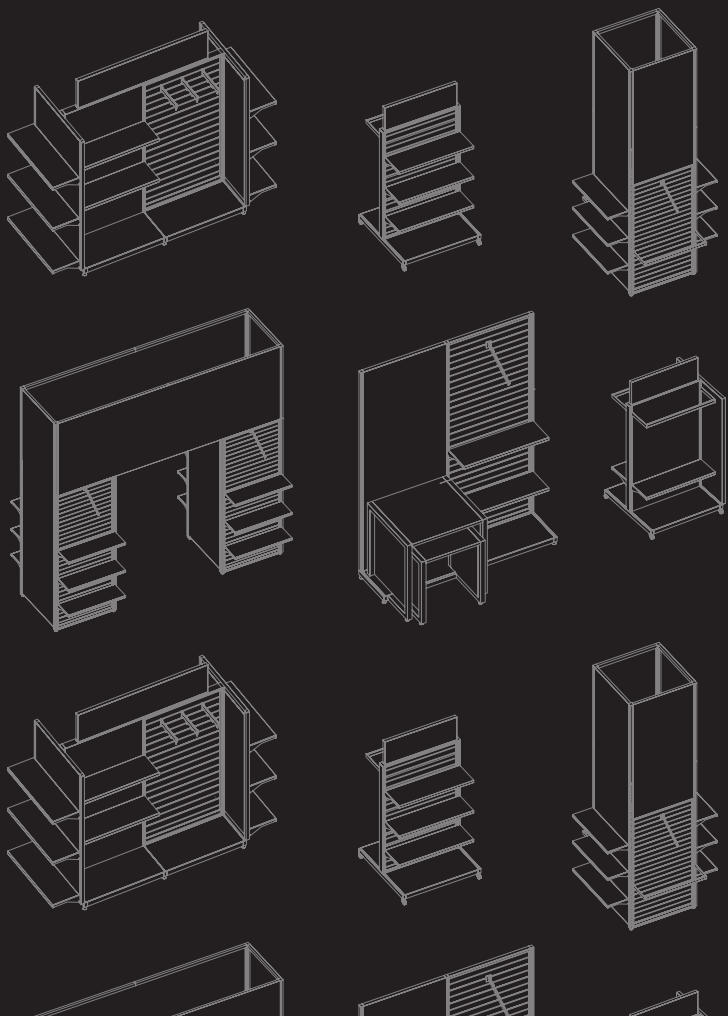


**RETAIL
DISPLAY**
solutions

RETAIL DISPLAY *solutions*

The Exhibitors' Handbook™ offers an extensive array of Visual Communications Solutions specifically designed for Retail Environments, Professional Interiors, Tradeshows and Events.

Our Retail Collection features MODify™, a one-of-a-kind Modular Merchandising System and BLAZE™, a premium LED light box series.



Contents

MODify™ Retail Merchandising System

06 SINGLE SIDED FIXTURES

10 DOUBLE SIDED FIXTURES

14 GONDOLA

16 FOUR SIDED FIXTURES

20 FURNITURE + ACCESSORIES

BLAZE™ SEG Light Boxes

28 WALL MOUNTED

30 FREESTANDING

32 HANGING



MODify

Retail Merchandising System

Welcome to **MODify**TM.

The MODifyTM collection of retail displays is a one-of-a kind system that incorporates SEG push-fit fabric graphics, which enable you to brand, promote and merchandise with ease! The premise of MODify is to do just that...modify with graphics, accessories and furniture.

What's so *great* about MODify™?

ULTIMATE *flexibility.*

*Silicone Edge
Graphics (SEG)*

Unlike any other Retail Merchandising System in the marketplace, MODify incorporates **SEG push-fit fabric graphics**, enabling you to design and replace graphics improving the longevity and value of your structure.

Quick ship

**7 days or less for
most fixtures!**

Easy to modify

**with graphics
and accessories.**

Simple assembly

**Associate
level install.**



It's Nice to Have Options!

MODify™ enables you to look different and stand out from the rest, while providing lifetime value and immense flexibility.

Graphics

Vibrant, SEG push-fit fabric graphics offer the flexibility to incorporate any color, pattern, brand or message.

Colors

Frames are offered in your choice of color.



white



black



silver

Easy fabric graphic install & changeout!

Accessories

Shelves, waterfall and faceouts can be mixed and matched.



It's as Easy as 1, 2, 3...



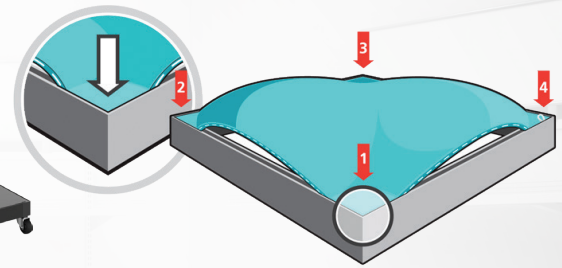
01 pick your Base

Choose the kit you like & imagine the branding and messaging you can incorporate on the graphics! Choose from three color finishes for the kit - white, black or silver.



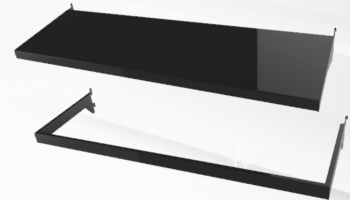
02 design your Graphics

The SEG push-fit fabric graphics allow you to incorporate any fabric color, texture (even woodgrain!) pattern, message or brand. Easily change for different messages and for the change of seasons!



MODify! *rinse. wash. repeat.*

New season, new brand, new look? Print new graphics and add different accessories to support your merchandising needs.



03 accessorize

Accessorize with shelves, hang bars, slatwall hooks, faceouts, waterfalls, towel bars and more. Mix and match and maximize value.



04 merchandise

Decorate with merchandise and start to sell!

**QUICK SHIP &
SIMPLE ASSEMBLY.
ASSOCIATE LEVEL
INSTALL.**

Made in North America

MODify

MODify™ Single Sided



Base Kit 01, shown in white

Base Kit includes 3 Shelves

KIT 01

SINGLE SIDED MERCHANDISE DISPLAY

MFY-SS-K-01-W/B/S | 37.5"W x 72"H x 20.5"D

Base Kit includes:

- four 36"W x 12"D steel shelves
- two 35"W x 69"H single sided SEG push-fit fabric graphics, one front/one back
- drop-in base
- all elements in kit are the same color, your choice of all white, black, or silver

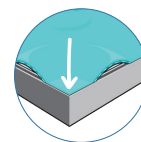
Kit Color Options



white

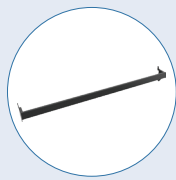
black

silver

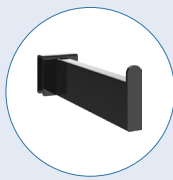


easy-to-apply graphics

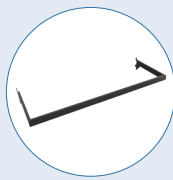
OPTIONAL ACCESSORIES:



Towel Bar



Faceout for Towel Bar



U Bar



Base Kit 02, shown in silver

MODify'd with Slatwall hooks

KIT 02

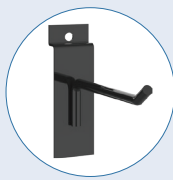
SINGLE SIDED MERCHANDISE DISPLAY WITH SLATWALL

MFY-SS-K-02-W/B/S | 37.5"W x 72"H x 20.5"D

Base Kit includes:

- 35"W x 72"H slatwall
- 35"W x 11"H SEG push-fit fabric graphic header
- drop-in base
- all elements in kit are the same color, your choice of all white, black, or silver

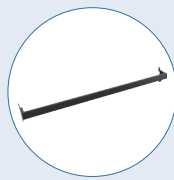
OPTIONAL ACCESSORIES:



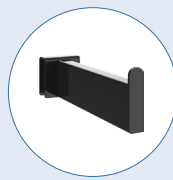
Slatwall Hooks



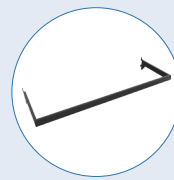
Waterfalls



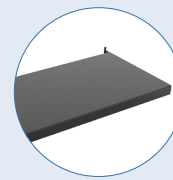
Towel Bar



Faceout for Towel Bar



U Bar



Shelves

MODify™ with graphics, accessories & furniture!



Base Kit 03,
shown in black



MODify'd with Shelves, Waterfalls
& Nesting Tables

KIT 03

SINGLE SIDED MERCHANDISE DISPLAY WITH
TWO SLATWALL PANELS

MFY-SS-K-03-W/B/S | 110"W x 96"H x 19"D

Base Kit includes:

- left & right 35"W x 96"H slatwall panels
- center SEG push-fit fabric graphic panel 35"W x 96"H
- non-rolling base
- all elements in kit are the same color, your choice of all white, black, or silver

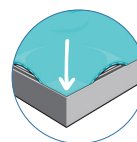
Kit Color Options



white

black

silver



easy-to-apply graphics

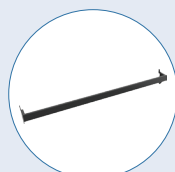
OPTIONAL ACCESSORIES:



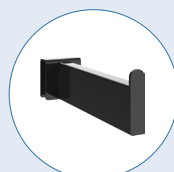
Slatwall Hooks



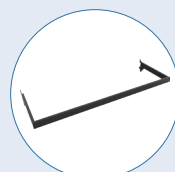
Waterfalls



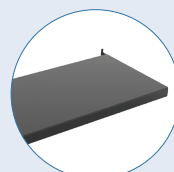
Towel Bar



Faceout for
Towel Bar



U Bar



Shelves

See page 22 for all accessory options!

Single Sided Kits

MODify

MODify™ Single Sided



Base Kit 04, shown in white



MODify'd with Shelves & Waterfalls

KIT 04

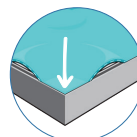
SINGLE SIDED MERCHANDISE DISPLAY
WITH THREE SLATWALL PANELS

MFY-SS-K-04-W/B/S | 110"W x 96"H x 19"D

Base Kit includes:

- three single sided 35"W x 96"H slatwall panels
- three 35"W x 11"H SEG push-fit graphic headers
- non-rolling base
- all elements in kit are the same color, your choice of all white, black, or silver

Kit Color Options



easy-to-apply graphics

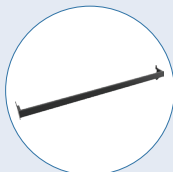
OPTIONAL ACCESSORIES:



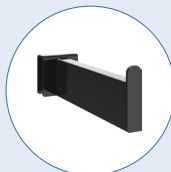
Slatwall Hooks



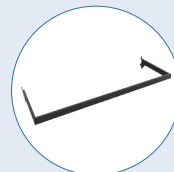
Waterfalls



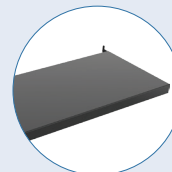
Towel Bar



Faceout for Towel Bar



U Bar



Shelves

See page 22 for all accessory options!

Merchandise with Ease!



Base Kit 05, shown in white



Waterfall →



Shelves

← Graphics

← Nesting Tables



MODify'd with Shelves, Waterfall & Nesting Tables

KIT 05

SINGLE SIDED MERCHANDISE DISPLAY
MFY-SS-K-05-W/B/S | 74"W x 96"H x 19"D

Base Kit includes:

- one 35"W x 96"H slatwall panel
- one 35"W x 93"H SEG push-fit fabric graphic
- non-rolling base
- all elements in kit are the same color, your choice of all white, black, or silver

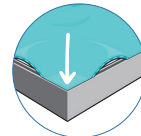
Kit Color Options



white

black

silver



easy-to-apply graphics

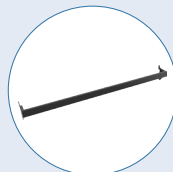
OPTIONAL ACCESSORIES:



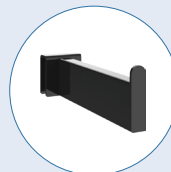
Slatwall Hooks



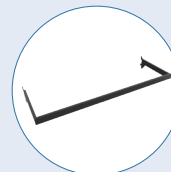
Waterfalls



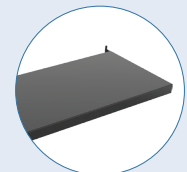
Towel Bar



Faceout for Towel Bar



U Bar



Shelves

See page 22 for all accessory options!

MODify™ Double Sided



Base Kit 01, shown in white



MODify'd with Shelves, U Bar & Casters



KIT 01

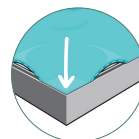
DOUBLE SIDED MERCHANDISE DISPLAY

MFY-DS-K-01-W/B/S | 37.5"W x 72"H x 37.5"D

Base Kit includes:

- double sided 35"W x 72"H slatwall display
- frame topper with 35"W x 12"H SEG push-fit fabric graphic, one on each side
- base (casters are optional)
- all elements in kit are the same color, your choice of all white, black, or silver

Kit Color Options



easy-to-apply graphics

OPTIONAL ACCESSORIES:



Slatwall Hooks



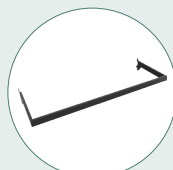
Waterfalls



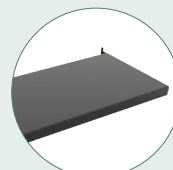
Towel Bar



Faceout for Towel Bar



U Bar



Shelves



Casters

See page 22 for all accessory options!

Tell your story through graphics!



Base Kit 02, shown in white



**MODify'd with Shelves,
Monitor Mounts & U Bars**

*32" monitors shown. Monitors not included.

KIT 02

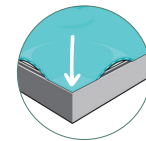
DOUBLE SIDED MERCHANDISE DISPLAY

MFY-DS-K-02-W/B/S | 74"W x 96"H x 37.5"D

Base Kit includes:

- four 36"W x 48"H slatwall panels, two on the front & two on the back
- four 35"W x 47"H SEG push-fit fabric graphic panels, two on the front & two on the back
- non-rolling base
- all elements in kit are the same color, your choice of all white, black, or silver

Kit Color Options



easy-to-apply graphics

OPTIONAL ACCESSORIES:



Slatwall Hooks



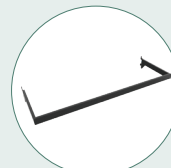
Waterfalls



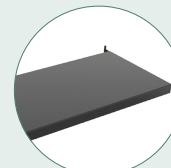
Towel Bar



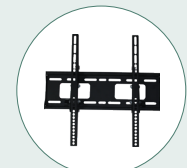
Faceout for
Towel Bar



U Bar



Shelves



Medium Monitor Mount*

See page 22 for all accessory options!

MODify™ Double Sided



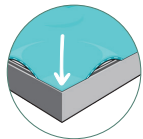
Base Kit 03, shown in black

KIT 03
DOUBLE SIDED MERCHANDISE DISPLAY
MFY-DS-K-03-W/B/S | 74"W x 72"H x 37.5"D

Base Kit includes:

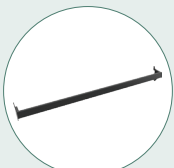
- side panel features SEG push-fit fabric graphics & six shelves, three shelves on each side
- open section used to hang apparel and merchandise
- base (casters are optional)
- all elements in kit are the same color, your choice of all white, black, or silver

Kit Color Options

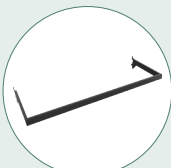


easy-to-apply graphics

OPTIONAL ACCESSORIES:



Towel Bar



U Bar



Casters

See page 22 for all accessory options!

MODify™ with Accessories & Furniture



Base Kit 04, shown in white



MODify'd with Shelves,
U Bars & Faceouts

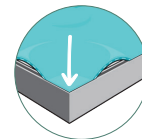
KIT 04

DOUBLE SIDED SLATWALL MERCHANDISE DISPLAY
MFY-DS-K-04-W/B/S | 110"W x 96"H x 37.5"D

Base Kit includes:

- three double sided 36"W x 96"H slatwall panels
- six 36"W x 12"H SEG push-fit fabric graphic headers
- non-rolling base
- all elements in kit are the same color, your choice of all white, black, or silver

Kit Color Options



easy-to-apply graphics

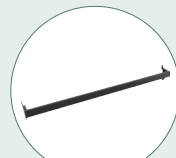
OPTIONAL ACCESSORIES:



Slatwall Hooks



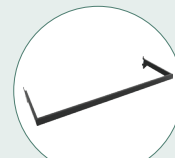
Waterfalls



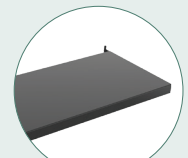
Towel Bar



Faceout for
Towel Bar



U Bar



Shelves

See page 22 for all accessory options!

MODify™ Gondolas



Base Kit 01, shown in white

*powerful graphics.
easy to change.*



MODify'd with Faceouts & Shelves

KIT 01

GONDOLA RETAIL DISPLAY

MFY-GN-K-01-W/B/S | 76.5"W x 72"H x 37.5"D

Base Kit includes:

- five frames: two ends, two center, one header
- 35"W x 57"H (full height) slatwall on front & back
- end caps each hold a 35"W x 57"H SEG push-fit fabric graphic, black liners on inside
- two 35"W x 57"H push-fit fabric graphics on inside of display
- frame topper with 59"W x 12"H SEG push-fit fabric graphic, one on each side
- non-rolling base
- all elements in kit are the same color, your choice of all white, black, or silver

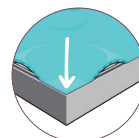
Kit Color Options



white

black

silver



easy-to-apply graphics

OPTIONAL ACCESSORIES:



Slatwall Hooks



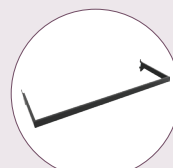
Waterfalls



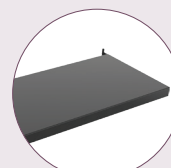
Towel Bar



Faceout for Towel Bar



U Bar



Shelves

MODify™ Merchandising Flexibility



Base Kit 02,
shown in black



MODify'd with Towel Bar,
Faceout for Towel Bar & Shelves

KIT 02

GONDOLA RETAIL DISPLAY

MFY-GN-K-02-W/B/S | 76.5"W x 96"H x 28.5"D

Base Kit includes:

- five frames: two ends, two center, one header
- two, 35"W sections in center hold SEG push-fit fabric graphics on both sides
- end caps each hold a 28"W x 81"H SEG push-fit fabric graphic, black liners on inside
- frame topper with 59"W x 12"H SEG push-fit fabric graphic, one on each side
- non-rolling base
- frame, slatwall and base colors in kit are all the same, your choice of all white, black or silver

Kit Color Options



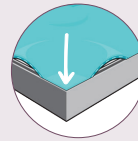
white



black



silver



easy-to-apply graphics



Base Kit 03,
shown in black



*Graphics
can be
printed textures,
like wood!*



**MODify'd with
Faceouts & Shelves**

KIT 03

GONDOLA RETAIL DISPLAY

MFY-GN-K-03-W/B/S | 39"W x 61.5"H x 37.5"D

Base Kit includes:

- three frames: side, center, one header
- center section holds 35.5"W x 57"H SEG push-fit fabric graphic, one on each side
- end cap includes a 37"W x 57"H SEG push-fit fabric graphic and black liner on inside
- rolling base (casters included)
- all elements in kit are the same color, your choice of all white, black, or silver

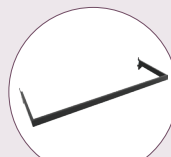
OPTIONAL ACCESSORIES:



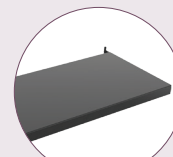
Towel Bar



Faceout for
Towel Bar



U Bar



Shelves

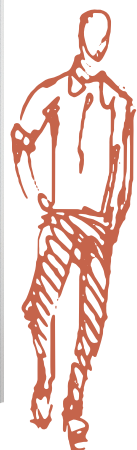
See page 22 for all accessory options!

MODify™ Four Sided Towers



Base Kit 01, shown in silver

Illuminated tower



MODify'd with Shelves, U Bars & Waterfalls

Waterfall

Shelves

U Bar

KIT 01

FOUR SIDED BACKLIT RETAIL TOWER

MFY-4S-K-01-W/B/S | 39"W x 144"H x 39"D

Base Kit includes:

- four frames & LED lights inside the tower make it glow
- two 36"W x 72"H slatwall panels on two sides with 36"W x 73"H SEG fabric graphics on top
- two 36"W x 141"H full height SEG fabric graphic panels
- all elements in kit are the same color, your choice of all white, black, or silver

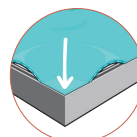
Kit Color Options



white

black

silver



easy-to-apply graphics

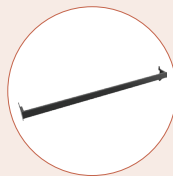
OPTIONAL ACCESSORIES:



Slatwall Hooks



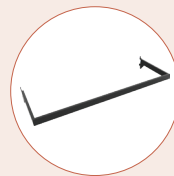
Waterfalls



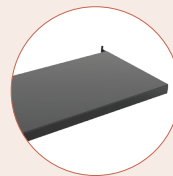
Towel Bar



Faceout for Towel Bar



U Bar



Shelves

MODify™ Four Sided Towers



Base Kit 02, shown in black



MODify'd with Monitor Mounts & Shelves

*32" monitors shown. Monitors not included.

KIT 02

FOUR SIDED RETAIL TOWER W/ SQUARE HEADER

MFY-4S-K-02-W/B/S | 60"W x 120"H x 60"D

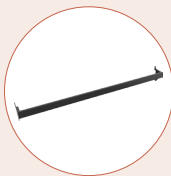
Base Kit includes:

- center tower holds four 36"W x 117"H SEG push-fit fabric graphics and can hold a multitude of fixtures for merchandising
- square header holds four 60"W x 18"H SEG push-fit fabric graphics & attaches to center tower
- all elements in kit are the same color, your choice of all white, black, or silver



Add a riser for additional merchandising!

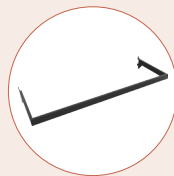
OPTIONAL ACCESSORIES:



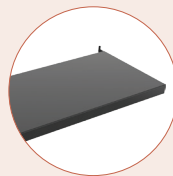
Towel Bar



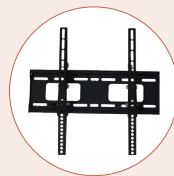
Faceout for Towel Bar



U Bar



Shelves



Medium Monitor Mount*

See page 22 for all accessory options!

Easy to **MODify™** for the Seasons



Base Kit 03, shown in white



MODified with Shelves & Waterfalls

KIT 03

FOUR SIDED ARCH RETAIL DISPLAY

MFY-4S-K-03-W/B/S | 148"W x 144"H x 39"D

Base Kit includes:

- two 36"W x 144"H towers on both sides hold slatwalls, fixtures and graphics
- four 36"W x 96.5"H slatwall panels, two on each tower
- overhead 140.5"W x 50"H SEG push-fit fabric graphic front and back commands attention
- all elements in kit are the same color, your choice of all white, black, or silver

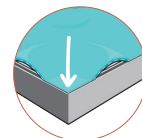
Kit Color Options



white

black

silver



easy-to-apply graphics

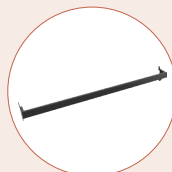
OPTIONAL ACCESSORIES:



Slatwall Hooks



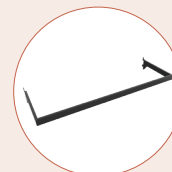
Waterfalls



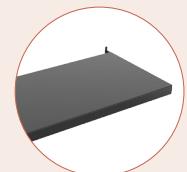
Towel Bar



Faceout for Towel Bar



U Bar



Shelves



MODify™ Accent Furniture

Merchandise

Complement your MODify Retail Display with furniture that helps you merchandise and put products on display.

RISERS

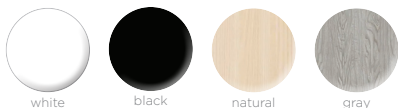
MFY-RSR-01 | 34"W x 18"H x 17.75"D

MFY-RSR-02 | 47.75"W x 12"H x 23.75"D

Risers feature a steel frame, a wood top and optional magnetic graphics

- black steel retail riser
- your choice of white, black, natural or gray woodgrain inset wood top
- optional Magnetic graphic for any side
- two size options

Laminate Color Options



shown with magnetic graphics

MODIFY NESTING TABLES

MFY-TBL-01-W/B/S | 56"W x 36"H x 30"D

MFY-TBL-02-W/B/S | 48"W x 30"H x 24"D

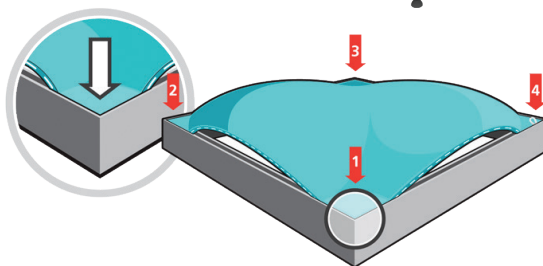
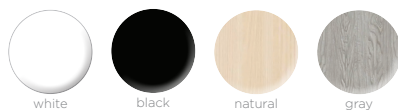
MFY-TBL-03-W/B/S | 34"W x 36"H x 30"D

MFY-TBL-04-W/B/S | 27"W x 30"H x 24"D

Nesting Tables feature aluminum frames, wood tops and optional SEG push-fit fabric graphics

- your choice of silver, black or white leg frames
- your choice of white, black, natural or gray woodgrain laminate wood top
- optional SEG push-fit graphic for each side

Laminate Color Options



easy-to-apply graphics



MODify™ Accent Furniture

Laminate Color Options

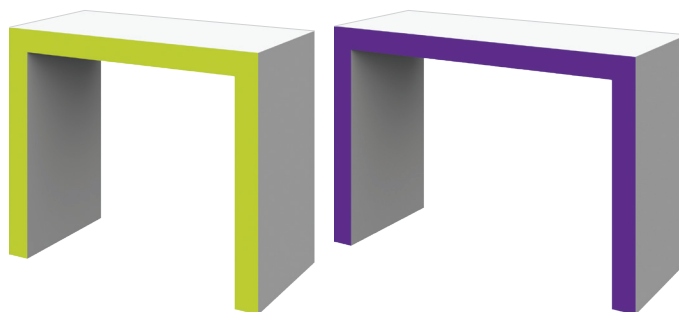


MODIFY DISPLAY TABLES

HPC-14 | 59"W x 39.5"H x 23"D

HPC-13 | 47.25"W x 39.5"H x 23"D

- sleek and stylish laminated wood table
- your choice of white, black, natural or gray woodgrain
- three pieces for quick assembly
- optional vinyl graphic adds a pop of color
- two size options



MODIFY COUNTER

HPC-02 | 70.88"W x 39.38"H x 23.63"D

- wood counter with lighting inside to make your brand glow
- your choice of white, black, natural or gray woodgrain
- SEG push-fit fabric graphic in your choice of opaque or backlit
- rear locking storage door
- durable aluminum feet
- holds max weight of 50 lbs.



MODIFY PEDESTALS

MFY-PED-01 | 16"W x 35.5"H x 16"D

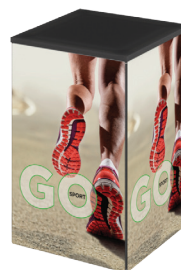
MFY-PED-01A | 16"W x 47.5"H x 16"D w/ topper

MFY-PED-02 | 16"W x 26"H x 16"D

MFY-PED-02A | 16"W x 35.5"H x 16"D w/ topper

- pedestal for merchandise display
- square, abrasion-resistant acrylic topper
- wood top comes in your choice of white, black, natural or gray woodgrain
- base consists of four, SEG push-fit fabric graphics

*available with or without
an acrylic topper* →



MFY-PED-01



MFY-PED-02A

MODify™ Accessories

MODIFY WITH ACCESSORIES

Accent and accessorize your MODify™ Retail Display with shelves, slatwall hooks, waterfalls, faceout bars, U bars and monitor mounts. Mix and match with various colors or keep uniform. MODify accessories can be used for any kit in the MODify collection.



SHELVES



36" WIDE, 12" DEEP SHELF
SILVER, BLACK, WHITE
MFY-SLF-36-12-S/W/B



36" WIDE, 12" DEEP HANG BAR SHELF
SILVER, BLACK, WHITE
MFY-SLF-36-12-HB-S/W/B

RAILS + RAIL ACCESSORIES



36" WIDE 2.75" DEEP TOWEL BAR
SILVER, BLACK, WHITE
MFY-SLT-TWL-36-3-S/W/B



5 PEG WATERFALL FOR TOWEL BAR, 12" LONG
SILVER, BLACK, WHITE
MFY-TWL-WTR-12-5-S/W/B



FACEOUT FOR TOWEL BAR, 6", 8", 10" LONG
SILVER, BLACK, WHITE
MFY-TWL-FC-6-S/W/B
MFY-TWL-FC-8-S/W/B
MFY-TWL-FC-10-S/W/B



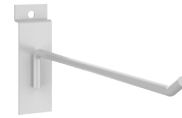
36" WIDE 12" DEEP U-SHAPED HANG BAR
SILVER, BLACK, WHITE
MFY-UBR-36-12-S/W/B



SLATWALL 7 PEG WATERFALL, 16" LONG
SILVER, BLACK, WHITE
MFY-SLT-WTR-16-7-S/W/B



SLATWALL FACEOUT, 6", 8", 10", 12"
SILVER, BLACK, WHITE
MFY-SLT-FC-6-S/W/B
MFY-SLT-FC-8-S/W/B
MFY-SLT-FC-10-S/W/B
MFY-SLT-FC-12-S/W/B



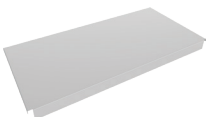
SLATWALL HOOKS 4", 6", 8", 10", 12"
SILVER, BLACK, WHITE
MFY-SLT-HK-4-S/W/B
MFY-SLT-HK-6-S/W/B
MFY-SLT-HK-8-S/W/B
MFY-SLT-HK-10-S/W/B
MFY-SLT-HK-12-S/W/B

CASTERS



CASTERS, 4 PACK - TWO CASTERS WITH STOPPERS, TWO WITHOUT
MFY-CSTR-4-PK

BASE DECKS

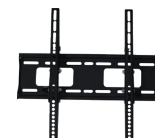


DROP-IN BASE DECK
36"W X 17.25"D DROP-IN BASE WITH 2" TOE KICK
SILVER, BLACK, WHITE
MFY-BD-36-17-W/B/S



SOLO BASE DECK
36"W X 17.25"D SOLO BASE DECK WITH 2" TOE KICK
SILVER, BLACK, WHITE
MFY-SBD-36-17-W/B/S

MONITOR MOUNT



MEDIUM MONITOR MOUNT
TUBE-M-MB

MODify™ *Fixture Options*

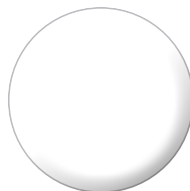
Again, it's Nice to Have *Options.*

COLOR FINISHES

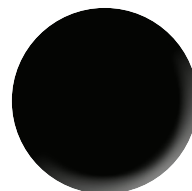
The MODify™ Retail Merchandising System offers three metal powder coat finishes. Base kits come in one color for the frame, base, slatwall and included accessories. Optional accessories and fixtures are an ideal way to mix and match colors.

Additional Finishes

We can powder coat any color! With a bit more time, we can colorize frames and fixtures to your desired colors.



white



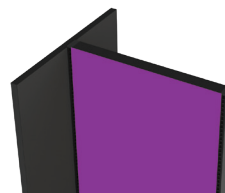
black



silver

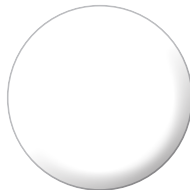
SEG PUSH-FIT FABRIC GRAPHICS

SEG push-fit fabric graphics allow you to incorporate any color, pattern, message or brand you wish to within the retail display. Easily change for different brands and for the change of seasons.

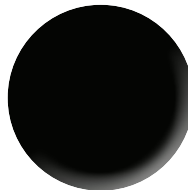


WOOD LAMINATE COLORS

Our laminate wood tops for nesting tables and risers are quality crafted and available in four color options.



white



black



natural



gray



Custom designed **RETAIL DISPLAYS**

The MODify Collection provides a multitude of finish and material options that will MODify and modernize your retail space. However, if you need a truly unique, custom solution, we have the creativity and capability to design and develop a unique retail display solution for your needs.

With over 20 years of experience in the design, construction, project management and realization of custom solutions, we have what it takes to bring your ideas to reality.

Reach out to our design team about custom retail solutions.

MODify™ Retail Merchandise System

NEED IT FAST?
THIS IS YOUR JAM.

WANT SOMETHING
DIFFERENT?
SLIGHTLY MODify.

LOOKING FOR
ONE OF A KIND?
WE CAN DO THAT!

| | STANDARD | SEMI-CUSTOM | CUSTOM |
|---------------------------------------|---|--|---|
| DEFINITION & COLOR OPTIONS | <p>Displays, accessories and accent furniture as shown with outlined colors and finish options.</p> <p>Colors: Black, White, Silver</p> <p>Wood colors: Black, White, Natural & Gray Woodgrain</p> <p>Graphics: Any color or pattern you wish, based on what you design!</p> | <p>Displays configured to a different height (same width ~ 36") or color.</p> <p>Frame colors: Endless Powder Coat color options for frames and standard accessories.</p> <p>Standard Accent Furniture needed in a different frame or wood color.</p> | <p>Unique shapes, sizes, and colors.</p> <p>Custom-developed displays, furnishings, and accessories per the sizes you need and desire.</p> <p>You specify the color for frames, accessories, and accent furnishings.</p> |
| LEAD TIME | <p>Design: Already done!</p> <p>Build: Quantity 1-4: 7 days Quantity 5-8: 8 days Quantity 9-12: 9 days</p> | <p>Design: 5 days</p> <p>Build: 2-4 weeks</p> | <p>Design: 2+ weeks Based on project scope.</p> <p>Build: 6-8+ weeks Based on project scope.</p> |
| PACKAGING | Boxed & skidded. | Boxed & skidded. | Boxed & skidded. |
| SERVICE LEVELS | <p>Self-serve.</p> <p>Pick your desired displays, accessories and accent furniture right out of the catalog. Design your artwork, submit, and order.</p> <p>Install: Self-serve install. Kits are designed for associate-level install and can be assembled per the easy set-up instructions provided.</p> <p>Need a Virtual image of a standard kit? No problem, request and we will provide in 24-48 hrs.</p> <p>Need a Virtual of a MODify'd kit, configured with the accessories you wish? No problem, request and we will provide in 24-72 hours.</p> | <p>Light Consult, Design & Estimate.</p> <p>Get to know more about you, your project and how you want the base MODify collection slightly MODify'd.</p> <p>Display virtual/design. Detailed estimate.</p> <p>Install: Your choice of self-serve or professional installation.</p> | <p>Heavy Consult & Conceptual Design.</p> <p>Conceptual design services for full environments and custom displays, accessories, and accent furniture.</p> <p>Prototypes, renderings, and fabrication drawings for approval. Store fixture program development and rollout.</p> <p>Install: Professional Installation service provided if needed.</p> |

Providing Ultimate Flexibility & Value

The Standard MODify Process

01

Pick Your MODify Fixture.

02

Design Your Graphics.

03

Select Your MODify Accessories.

04

Accent with MODify Furniture.

05

Place Your Order.

06

We Make & Ship.

07

You Install. Our easy-to-use instructions detail step-by-step assembly.

What's so *great* about MODify™?

- Superior, **vibrant** SEG push-fit fabric graphics.
- Turnkey - **7 days** for most displays!
- Simple assembly - associate level install.
- Three color options: White, Black, and Silver.
- Easy to MODify with shelves and fixtures.
- Frames & graphics are **made in North America**.
- Remarkable quality! Lifetime frame warranty and **easy graphic changeout**.
- Customized retail displays available!

BLAZE

SEG Light Boxes



Introducing BLAZE™.

The word says it all! Blaze SEG Light Boxes are the ultimate in vibrancy, quality and durability. Blaze Light Boxes add life, color and illumination to corporate interiors, retail stores and restaurants, and they make brands come to life at events and tradeshows.

What's so *great* about BLAZE™?

No shadowing

Unlike most other Light Boxes, BLAZE has **full perimeter lights**, virtually eliminating shadowing!

*Simple
assembly*

**Associate
level install.**

Longevity

**5 year lighting
warranty
& lifetime frame
warranty.**

*Quick
ship*

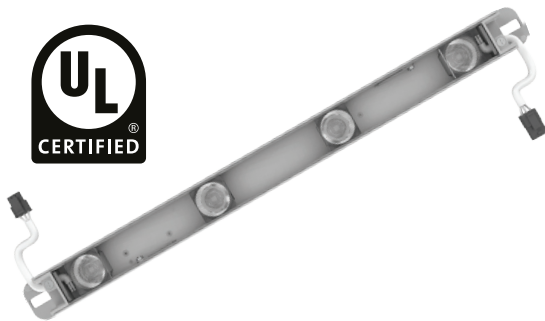
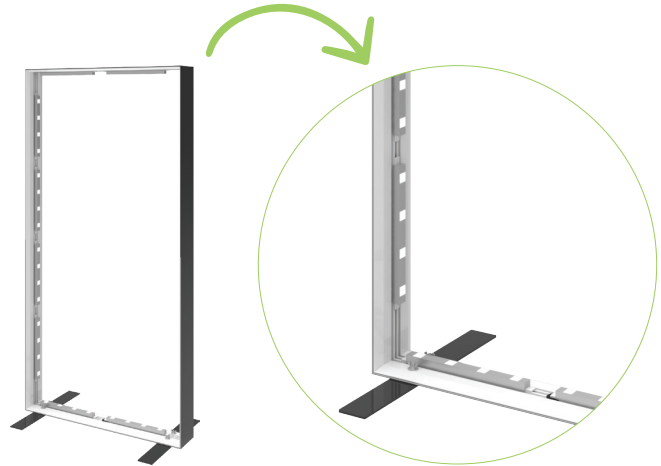
3 days or less!

Highlighting Blaze

Blaze SEG Light Boxes are designed to help you attract, captivate and impress. Whether the graphics are feature artwork, or promote products and brands, Blaze SEG Light Boxes will bring to life through frame, lights and fabric.

Frame

- wall: 4" depth
- freestanding & hanging: 6" depth
- your choice of White, Black or Silver
- lifetime frame warranty
- UL Certified
- ADA compliant sizing, approved for public spaces
- engineering stamps for Hanging Blaze available upon request
- made in North America



Superior Lights

- light bars feature an **internal power supply**, which means no separate power supplies within the frame.
- perimeter lights are pre-attached to the frame
- UL Certified
- long life span—43,800 hours for 5 years if powered 24/7
- 5 year LED warranty

Vibrant SEG Graphics

- your choice of materials: Backlit Textile (dye-sublimation printed) or Intensity (UV/LED printed)
- Backlit Textile is a tightly woven fabric that is slightly stretchy, foldable and washable; it is best for multiple uses.
- Intensity is a material that has a smooth, coated finish. The double-strike process creates vibrant backlit graphics.
- graphics printed & finished with state-of-the-art equipment
- superior color vibrancy, quality and fit





BLAZE™ Wall Mounted Light Boxes



Long-lasting investment!

Details

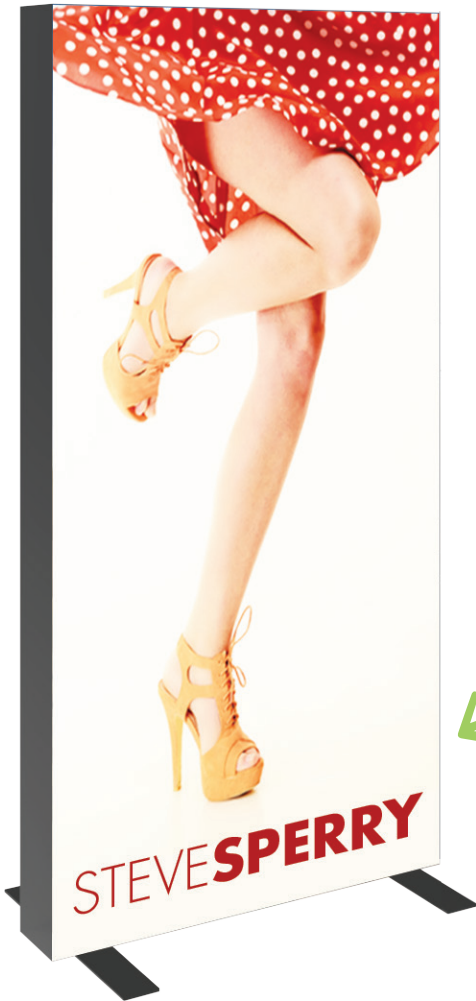
- 4" light boxes feature a sleek, aluminum frame, available in white, black or silver
- perimeter LED light bars are pre-attached to the frame
- light bars feature an internal power supply, which means no separate power supplies within the frame
- simple assembly; comes with hanging hardware
- UL Certified & ADA compliant sizing, approved for public spaces
- 5 year LED warranty on lights; long life span - 43,800 hours for 5 years if powered 24/7
- lifetime warranty on frame

Frame Color Options

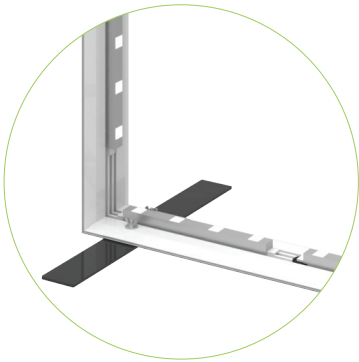


Size Options

| name | code | assembled dimensions |
|-----------------|--------------------|------------------------|
| Blaze Wall 0603 | BLZ-W-0603-S/B/W-F | 72" w x 36" h x 4" d |
| Blaze Wall 0604 | BLZ-W-0604-S/B/W-F | 72" w x 48" h x 4" d |
| Blaze Wall 0606 | BLZ-W-0606-S/B/W-F | 72" w x 72" h x 4" d |
| Blaze Wall 0803 | BLZ-W-0803-S/B/W-F | 96" w x 36" h x 4" d |
| Blaze Wall 0804 | BLZ-W-0804-S/B/W-F | 96" w x 48" h x 4" d |
| Blaze Wall 0806 | BLZ-W-0806-S/B/W-F | 96" w x 72" h x 4" d |
| Blaze Wall 0808 | BLZ-W-0808-S/B/W-F | 96" w x 96" h x 4" d |
| Blaze Wall 1008 | BLZ-W-1008-S/B/W-F | 120" w x 96" h x 4" d |
| Blaze Wall 1010 | BLZ-W-1010-S/B/W-F | 120" w x 120" h x 4" d |
| Blaze Wall 2008 | BLZ-W-2008-S/B/W-F | 240" w x 96" h x 4" d |
| Blaze Wall 2010 | BLZ-W-2010-S/B/W-F | 240" w x 120" h x 4" d |
| Blaze Wall 3008 | BLZ-W-3008-S/B/W-F | 360" w x 96" h x 4" d |
| Blaze Wall 3010 | BLZ-W-3010-S/B/W-F | 360" w x 120" h x 4" d |



Versatile for interiors,
retail and events



frame



lights



fabric

Easy graphic changeout

Shown in black

Details

- 6" light boxes feature a sleek, aluminum frame, available in white, black or silver
- perimeter LED light bars are pre-attached to the frame
- light bars feature an internal power supply, which means no separate power supplies within the frame
- simple assembly
- UL Certified & ADA compliant feet, 3/16"h, approved for public spaces
- 5 year LED warranty on lights; long life span - 43,800 hours for 5 years if powered 24/7
- lifetime warranty on frame
- comes in heavy duty box; hard-shell case is optional

Size Options

| name | code | assembled dimensions |
|------------|----------------|------------------------------|
| Blaze 0306 | BLZ-0306-S/B/W | Ⓢ 36" w x 72" h x 21.65" d |
| Blaze 0308 | BLZ-0308-S/B/W | Ⓢ 36" w x 96" h x 21.65" d |
| Blaze 0406 | BLZ-0406-S/B/W | Ⓢ 48" w x 72" h x 21.65" d |
| Blaze 0408 | BLZ-0408-S/B/W | Ⓢ 48" w x 96" h x 21.65" d |
| Blaze 0808 | BLZ-0808-S/B/W | Ⓢ 96" w x 96" h x 21.65" d |
| Blaze 1008 | BLZ-1008-S/B/W | Ⓢ 120" w x 96" h x 21.65" d |
| Blaze 1010 | BLZ-1010-S/B/W | Ⓢ 120" w x 120" h x 21.65" d |
| Blaze 2010 | BLZ-2010-S/B/W | Ⓢ 240" w x 120" h x 21.65" d |
| Blaze 3010 | BLZ-3010-S/B/W | Ⓢ 360" w x 120" h x 21.65" d |

Frame Color Options



white

black

silver



R
roga





BLAZE™ *Hanging Light Boxes*



Details

- 6" light boxes feature a sleek, aluminum frame available in white, black or silver
- perimeter LED light bars are pre-attached to the frame
- light bars feature an internal power supply, which means no separate power supplies within the frame
- simple assembly; comes with hanging cables
- UL Certified & ADA compliant sizing, approved for public spaces
- 5 year LED warranty on lights; long life span - 43,800 hours for 5 years if powered 24/7
- lifetime warranty on frame

Frame Color Options



Size Options

| name | code | assembled dimensions |
|--------------------|------------|-----------------------|
| Blaze Hanging 0603 | BLZ-H-0603 | Ⓢ 72"w x 36"h x 6"d |
| Blaze Hanging 0604 | BLZ-H-0604 | Ⓢ 72"w x 48"h x 6"d |
| Blaze Hanging 0606 | BLZ-H-0606 | Ⓢ 72"w x 72"h x 6"d |
| Blaze Hanging 0803 | BLZ-H-0803 | Ⓢ 96"w x 36"h x 6"d |
| Blaze Hanging 0804 | BLZ-H-0804 | Ⓢ 96"w x 48"h x 6"d |
| Blaze Hanging 0806 | BLZ-H-0806 | Ⓢ 96"w x 72"h x 6"d |
| Blaze Hanging 0808 | BLZ-H-0808 | Ⓢ 96"w x 96"h x 6"d |
| Blaze Hanging 1008 | BLZ-H-1008 | Ⓢ 120"w x 96"h x 6"d |
| Blaze Hanging 1010 | BLZ-H-1010 | Ⓢ 120"w x 120"h x 6"d |
| Blaze Hanging 2008 | BLZ-H-2008 | Ⓢ 240"w x 96"h x 6"d |
| Blaze Hanging 2010 | BLZ-W-2010 | Ⓢ 240"w x 120"h x 6"d |
| Blaze Hanging 3008 | BLZ-W-3008 | Ⓢ 360"w x 96"h x 6"d |
| Blaze Hanging 3010 | BLZ-W-3010 | Ⓢ 360"w x 120"h x 6"d |

MODify™

Retail Merchandising System

- Silicone Edge Graphics (SEG)
- Quick ship
- Easy to modify
- Simple assembly

BLAZE™

SEG Light Boxes

- No shadowing
- Simple assembly
- Longevity
- Quick ship

THE EXHIBITORS'
**HAND
BOOK**
MODULAR DISPLAY SOLUTIONS

theexhibitorshandbook.com